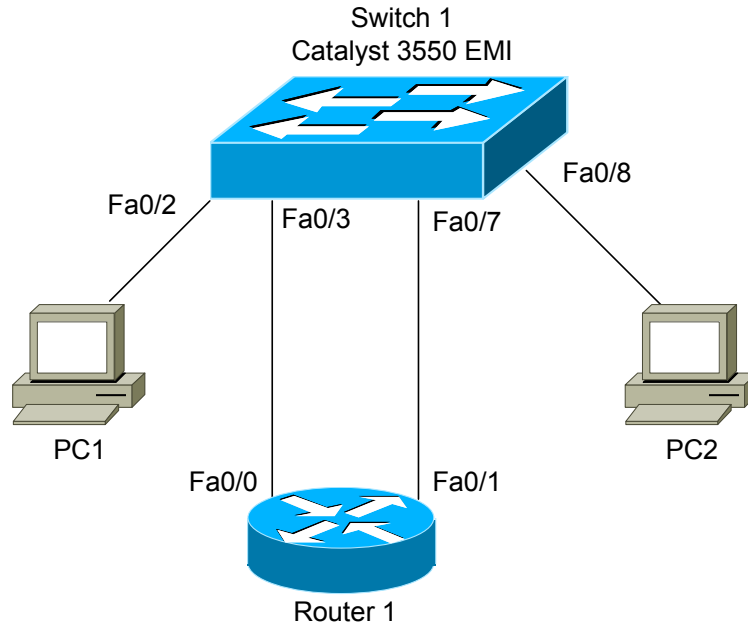


- Multilayer Switching Lab -

Multilayer Switching – Lab



Basic Objectives:

1. Configure and cable the Ethernet interfaces on both the switch and router as indicated in the above diagram.
2. Configure the Ethernet interfaces on the router with the following IP addresses:

Router 1 fa0/0: 192.168.0.1/24

Router 1 fa0/1: 192.168.1.1/24

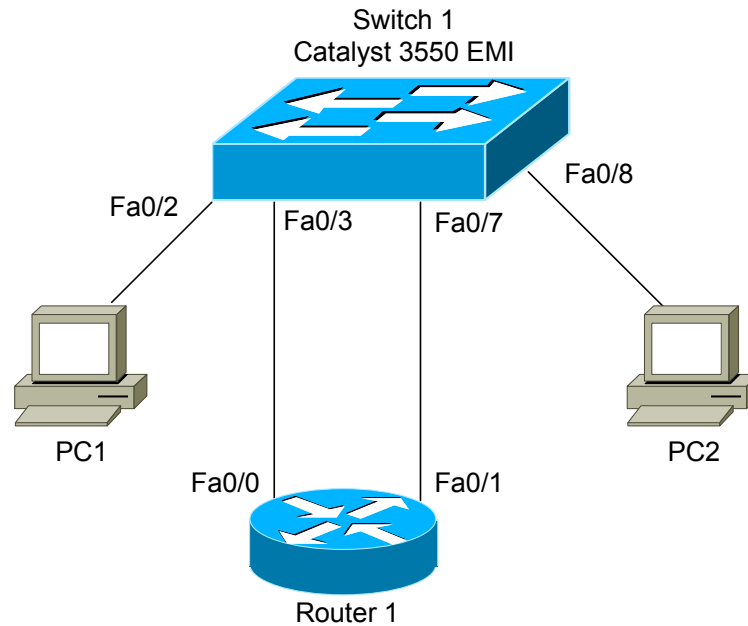
3. Use an operating system of your choice on PC1 and PC2. Ensure that each is running the TCP/IP stack.

* * *

All original material copyright © 2006 by Aaron Balchunas (aaron@routeralley.com), unless otherwise noted. All other material copyright © of their respective owners.

This material may be copied and used freely, but may not be altered or sold without the expressed written consent of the owner of the above copyright. Updated material may be found at <http://www.routeralley.com>.

Multilayer Switching – Lab (continued)



Standard VLAN Routing Objectives:

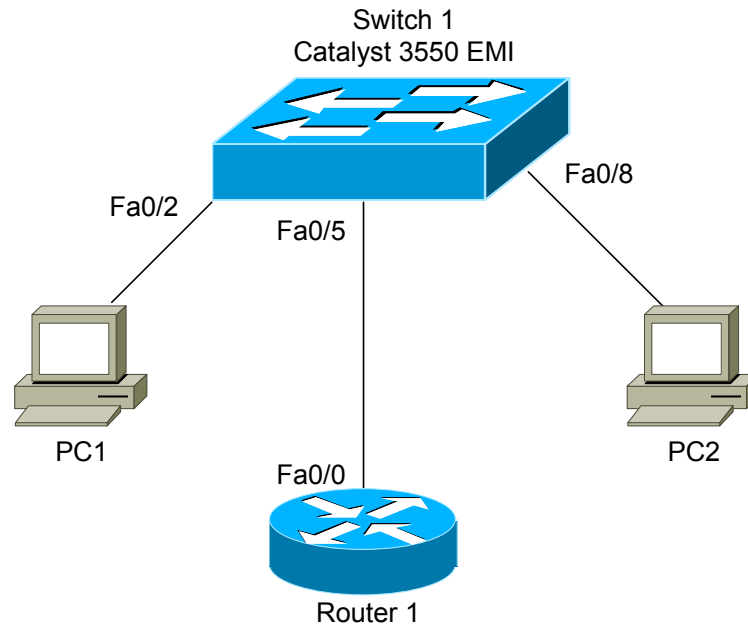
4. Create VLANs 100 and 200 on Switch 1. Assign switchports fa0/2 and fa0/3 to VLAN 100, and switchports fa0/7 and fa0/8 to VLAN 200.

5. Configure the router to pass traffic between VLANs 100 and 200.

6. Configure a default gateway on each PC, pointing to the appropriate interface on the router. Ensure connectivity between the two PC's.

* * *

Multilayer Switching – Lab (continued)



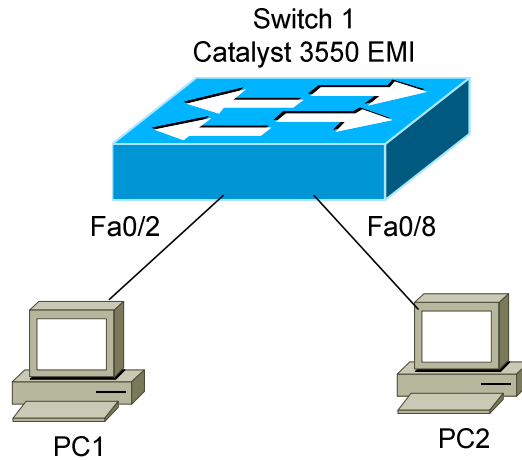
Router-on-a-Stick Objectives:

7. Reconfigure and cable the Ethernet interfaces on both the switch and router as indicated in the above **new** diagram. Ensure that VLANs 100 and 200 are still created, and that switchport fa0/2 is assigned to VLAN 100, and switchport fa0/8 is assigned to VLAN 200.

8. Configure switchport fa0/5 as appropriate to pass all VLAN traffic to Router 1.

9. Configure Router 1's fa0/0 as appropriate to route between VLANs 100 and 200. Configure PC 1's and PC 2's default gateways as appropriate to ensure connectivity.

Multilayer Switching – Lab (continued)



Multilayer Switching Objectives:

10. Reconfigure and cable the Ethernet interfaces on both the switch and router as indicated in the above **final** diagram. Ensure that VLANs 100 and 200 are still created, and that switchport fa0/2 is assigned to VLAN 100, and switchport fa0/8 is assigned to VLAN 200.

11. Configure multilayer switching as appropriate to route between VLAN 100 and VLAN 200.

12. Configure PC 1's and PC 2's default gateways as appropriate to ensure connectivity.

* * *