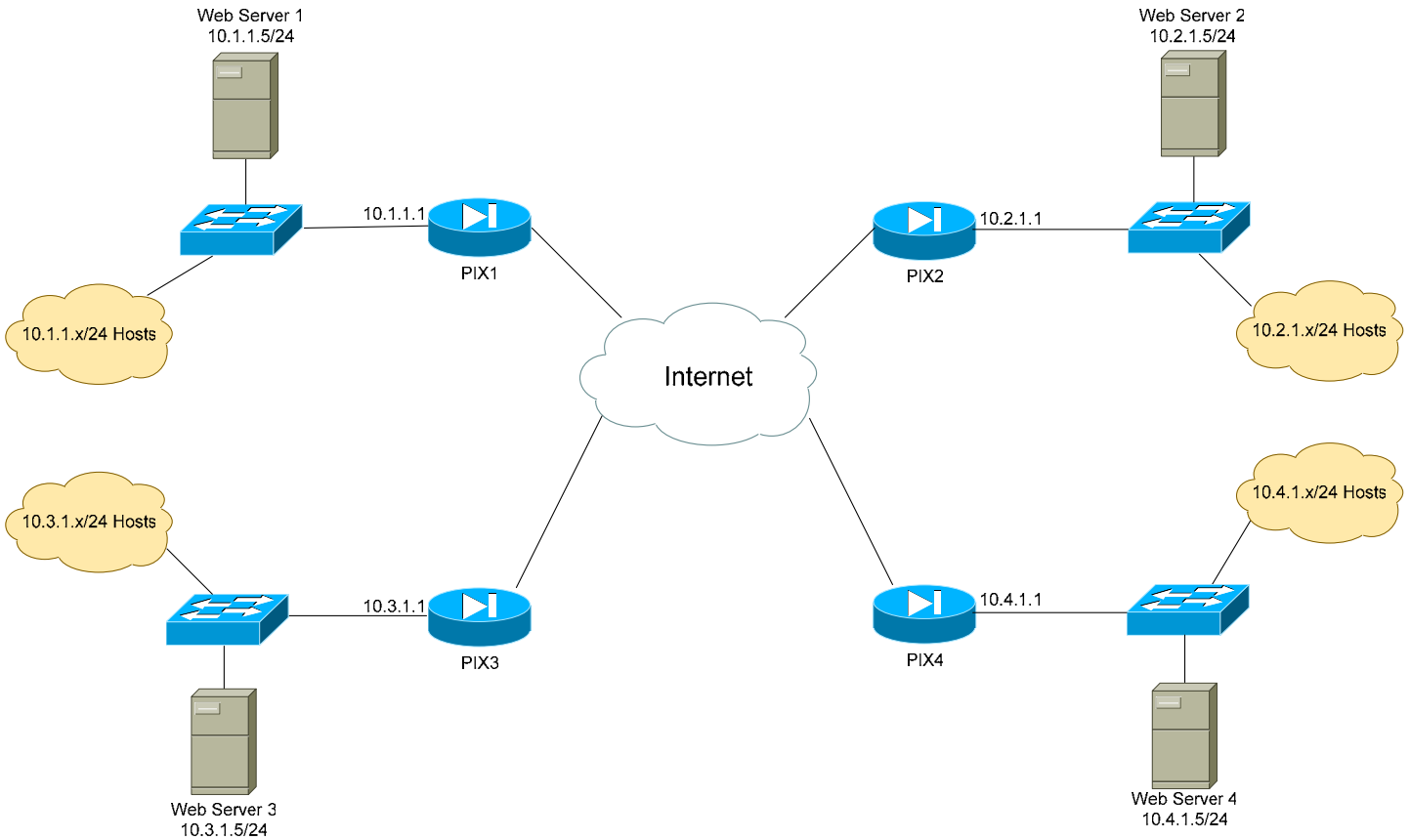


- PIX Basic IPSEC Lab -

Configuring Basic PIX IPSEC – Lab

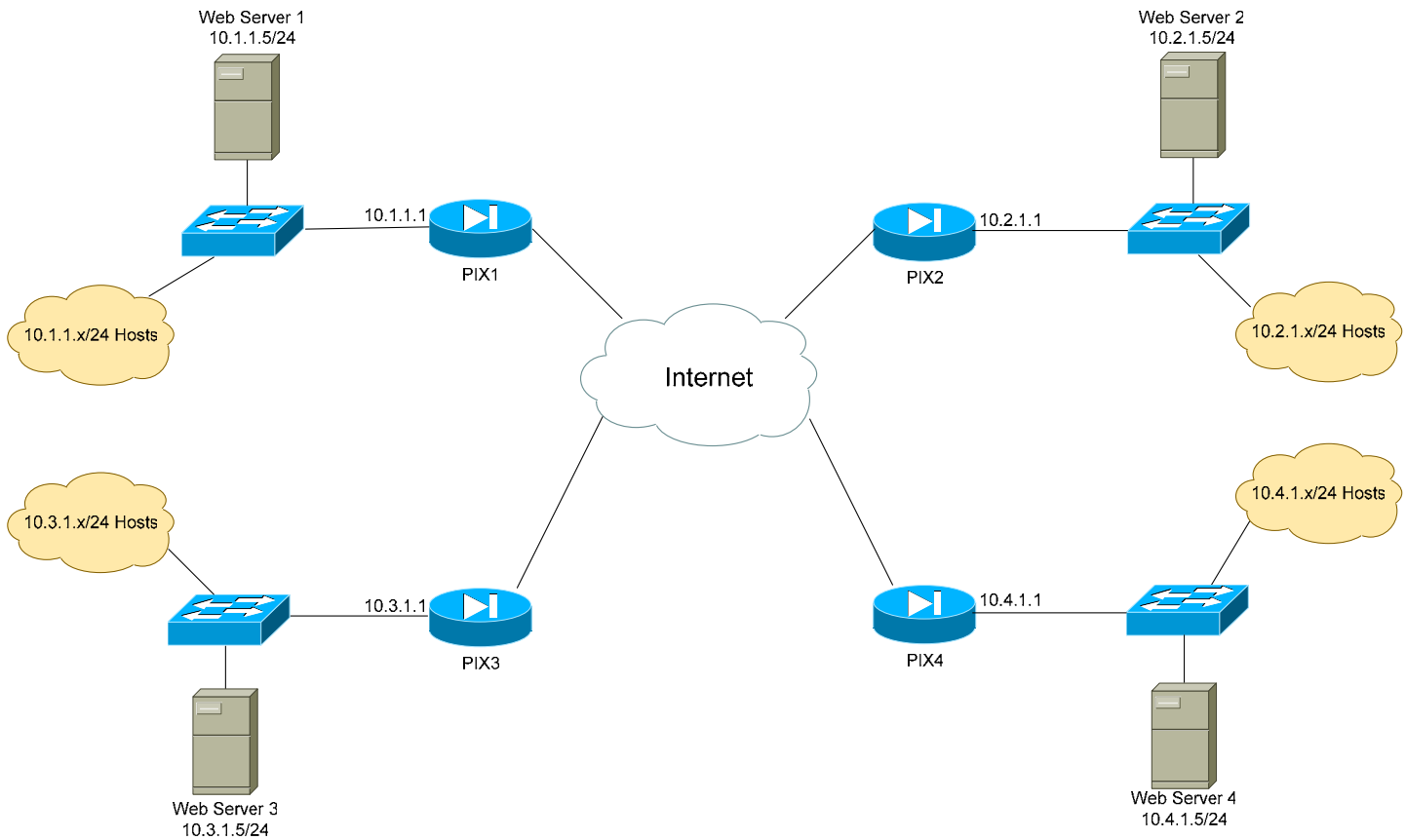


Basic Objectives:

1. Configure and cable the Ethernet interfaces as indicated in the above diagram.
2. Configure a web server for each network, and apply an IP address as diagrammed.
3. Your instructor will configure a router or Layer-3 switch to function as a pseudo “Internet.”

* * *

All original material copyright © 2008 by Aaron Balchunas (aaron@routeralley.com), unless otherwise noted. All other material copyright © of their respective owners. This material may be copied and used freely, but may not be altered or sold without the expressed written consent of the owner of the above copyright. Updated material may be found at <http://www.routeralley.com>.

Configuring Basic PIX IPSEC – Lab (continued)**PIX Objectives:**

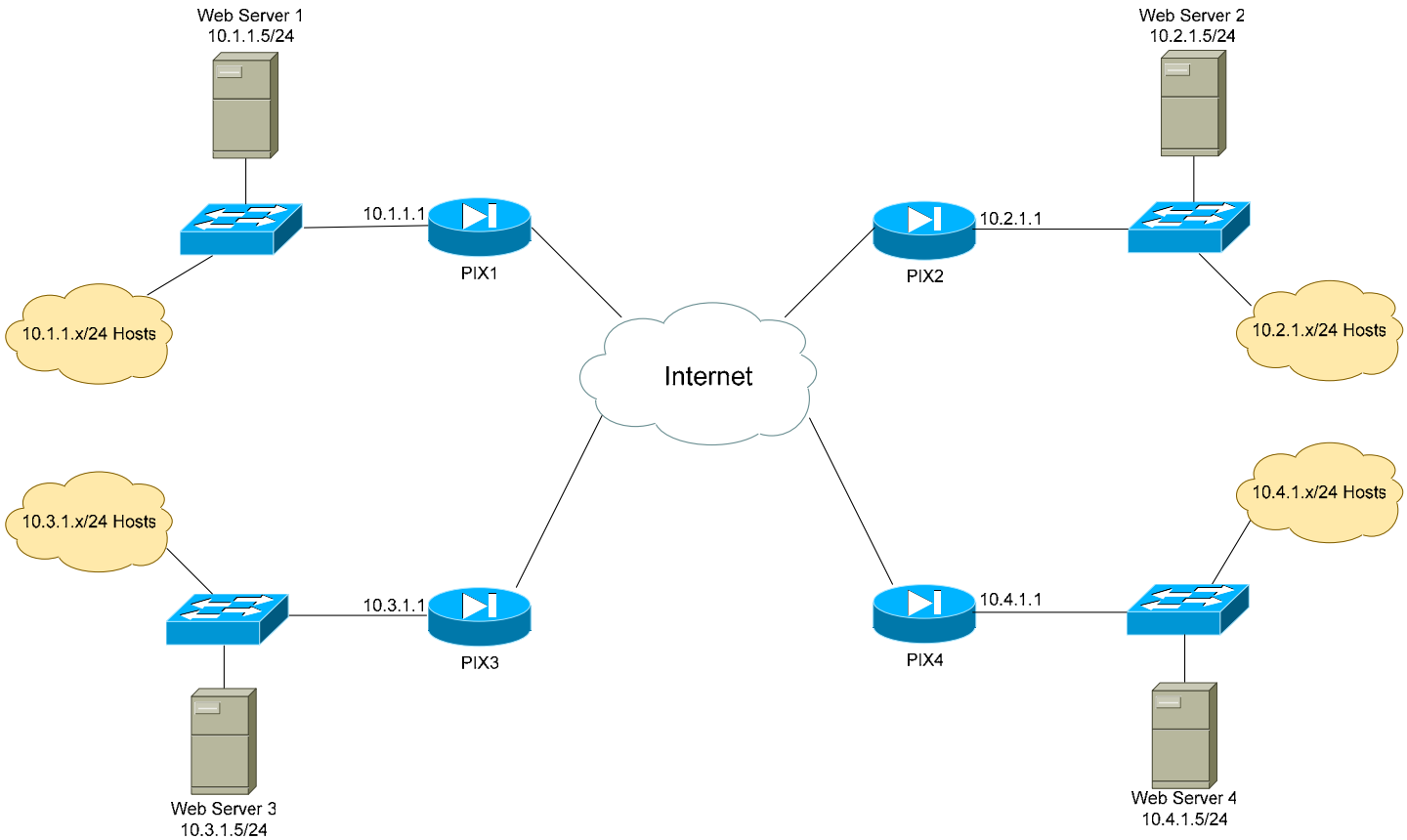
4. Each network has been assigned a pool of public addresses, in the YY.YY.YY.64/29 range, where “Y” is the network or PIX number. For example, PIX3 has been assigned the 33.33.33.64/29 range of public addresses.
5. The first usable address in each public range will be the next-hop address to the Internet. The second usable address in each public range should be applied to the outside interface of each PIX.

* * *

All original material copyright © 2008 by Aaron Balchunas (aaron@routeralley.com), unless otherwise noted. All other material copyright © of their respective owners.

This material may be copied and used freely, but may not be altered or sold without the expressed written consent of the owner of the above copyright. Updated material may be found at <http://www.routeralley.com>.

Configuring Basic PIX IPSEC – Lab (continued)

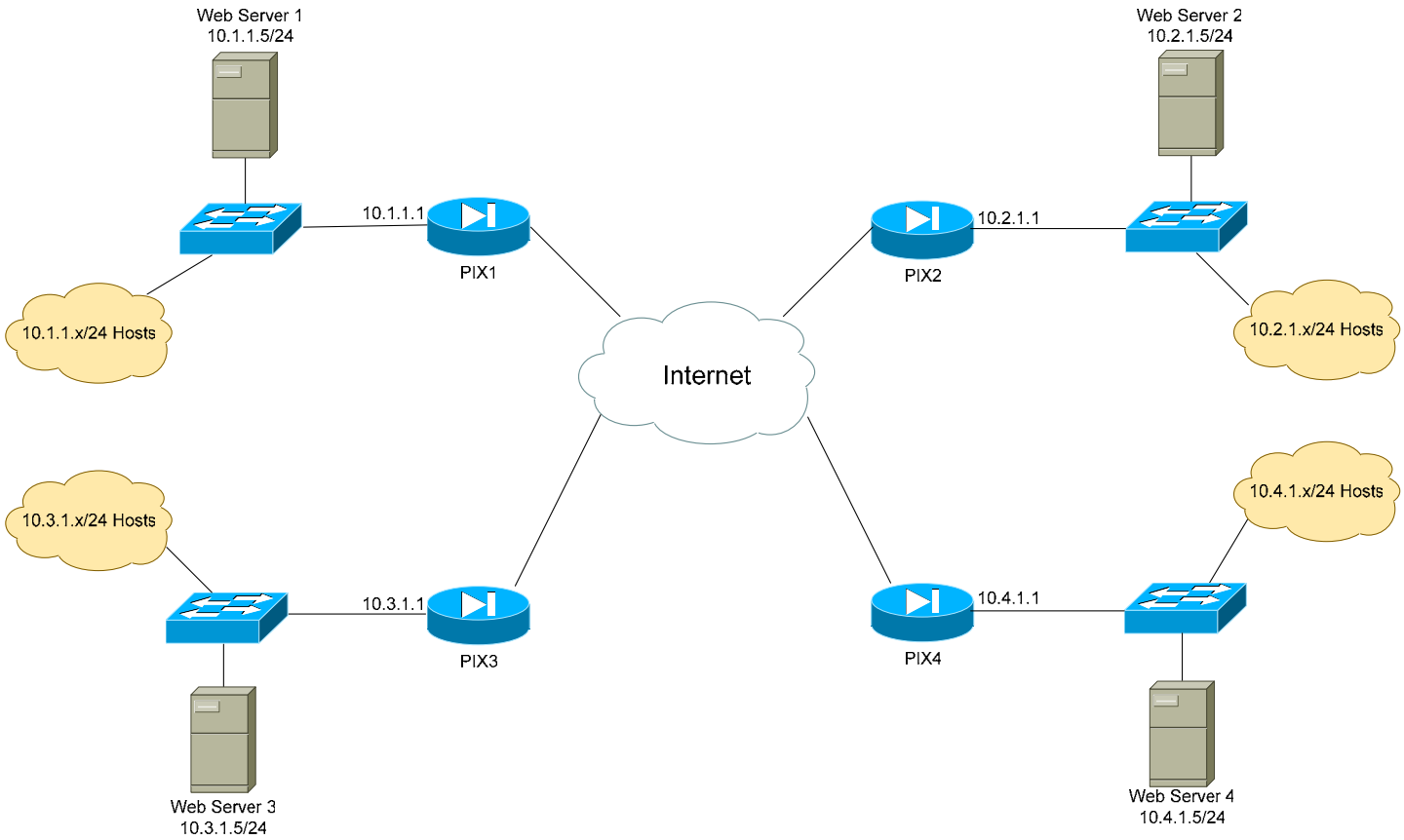


PIX Objectives:

- 6. Ensure that hosts on each local LAN are NAT'ed using PAT when accessing the Internet. Use a public address of your choosing.

- 7. Ensure that all interfaces on each PIX are pingable.

Configuring Basic PIX IPSEC – Lab (continued)



PIX Objectives:

9. Test the IPsec tunnels, by ensuring that each Web Server can access all other Web Servers by their *private* IP address.
